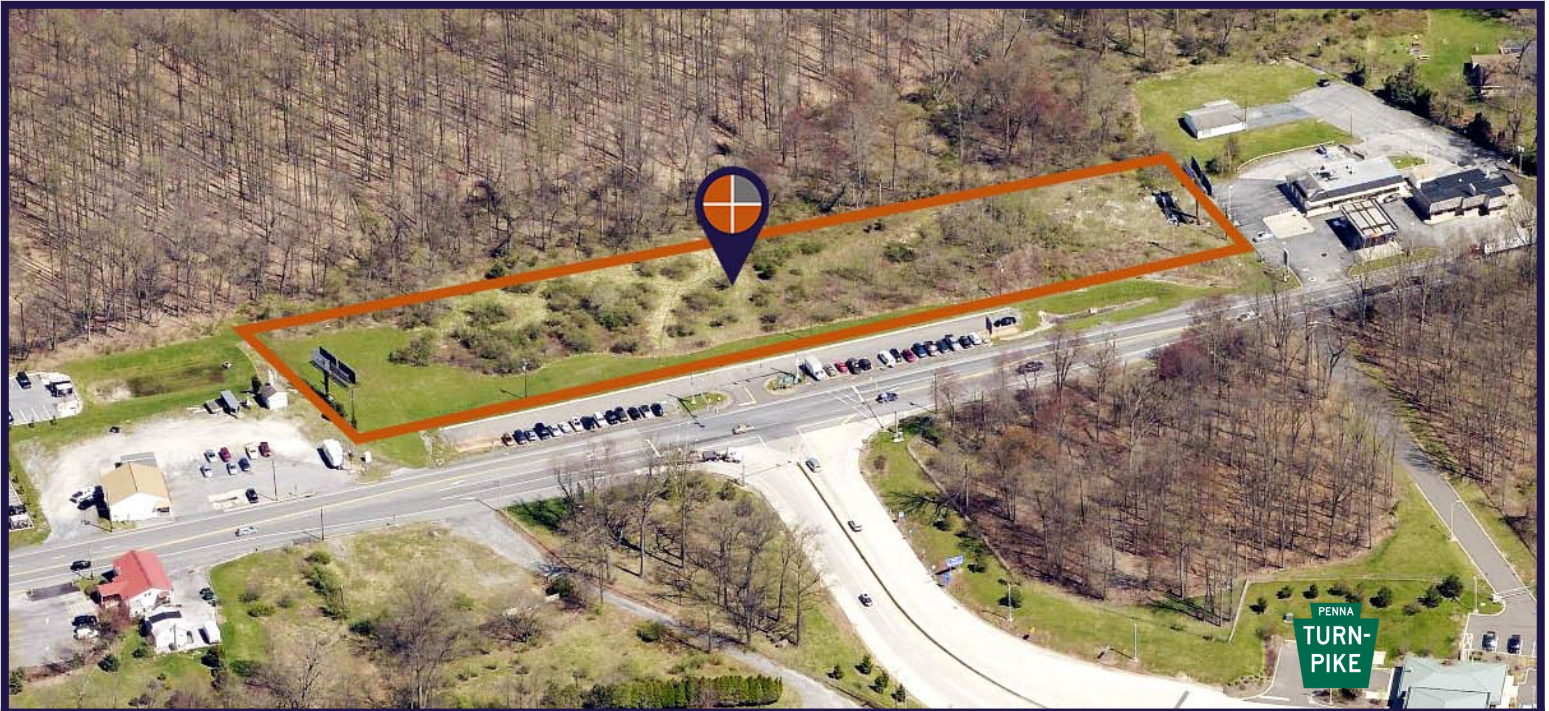


FOR SALE - VACANT 3 ACRE LOT

At the Intersection of PA 72 and the Pennsylvania Turnpike

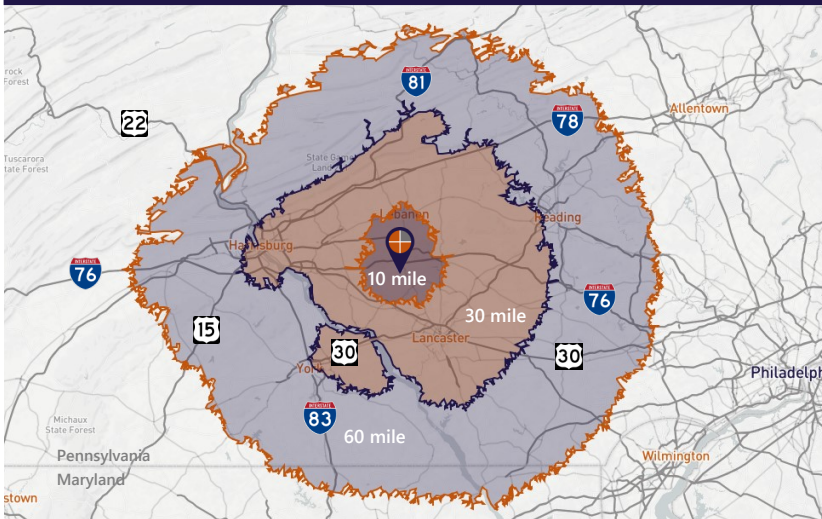
Rapho Township | Lancaster County

3.10 ACRES



3000 Lebanon Road (PA 72) Manheim, PA 17545

Travel Distance from Site



Offering Overview: \$425,000

Location & Market Highlights

- Vacant 3.10 acre lot located at the intersection of PA 72 and the Pennsylvania Turnpike.
- This lot is well positioned and suitable for a variety of uses.
- Zoned: Highway Commercial
- Property is located directly behind the Park and Ride across from the Pennsylvania Turnpike Entrance.

FOR MORE INFORMATION CALL 717.850.TRUE (8783)

Darin R. Wolfe

Cell: 717.669.1187

drwolfe@TRUECommercial.com

TRUE
Commercial Real Estate LLC

1018 North Christian Street Lancaster PA 17602 | www.TRUECommercial.com

The information has been secured from sources we believe to be reliable. TRUE Commercial Real Estate LLC makes no representations or warranties, express or implied, as to the accuracy of the information. References to square footage or age are approximate. Buyer must verify the information and bears all risk for any inaccuracies.



FOR MORE INFORMATION CALL 717.850.TRUE (8783)

Darin R. Wolfe

Cell: 717.669.1187

drwolfe@TRUECommercial.com

TRUE
Commercial Real Estate LLC

1018 North Christian Street Lancaster PA 17602 | www.TRUECommercial.com

The information has been secured from sources we believe to be reliable. TRUE Commercial Real Estate LLC makes no representations or warranties, express or implied, as to the accuracy of the information. References to square footage or age are approximate. Buyer must verify the information and bears all risk for any inaccuracies.